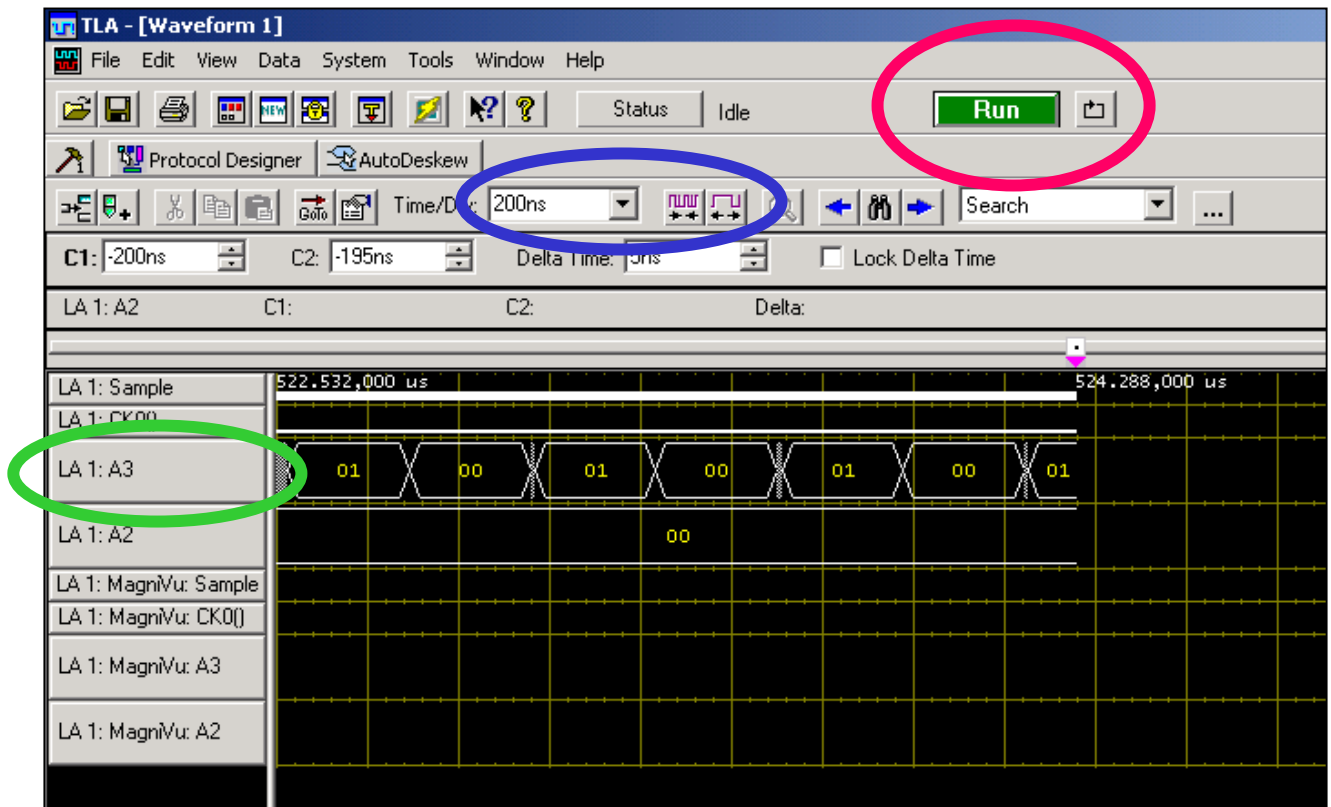


Quick Start Guide to the Tektronix Logic Analyzer

MIT 6.111 Lab

1. Getting started

- Power up the logic analyzer; wait for it to boot into win2k
- Accept default configuration (skipping the wizard is ok)
- Connect your “flying leads” to a probe (recommended: **A3**)
- Signals should go to leads 0-7, and ground to black
- Find this window (“waveform”):



- Click “**RUN**” to start, then click “**STOP**” (same place)
- Browse your data using sliders, by changing time/div, and using the two **zoom buttons**
- Right-click on “**LA1:A3**” to expand and collapse signals

Quick Start Guide to the Tektronix Logic Analyzer

MIT 6.111 Lab

2. Triggering

- Default configuration: “trigger immediately”
- To trigger on a value (of a group of lines)
 - Click on the **“trigger” icon**
 - Select **“Simple events”**
 - “Trigger on group value”
 - Input **group & value**

