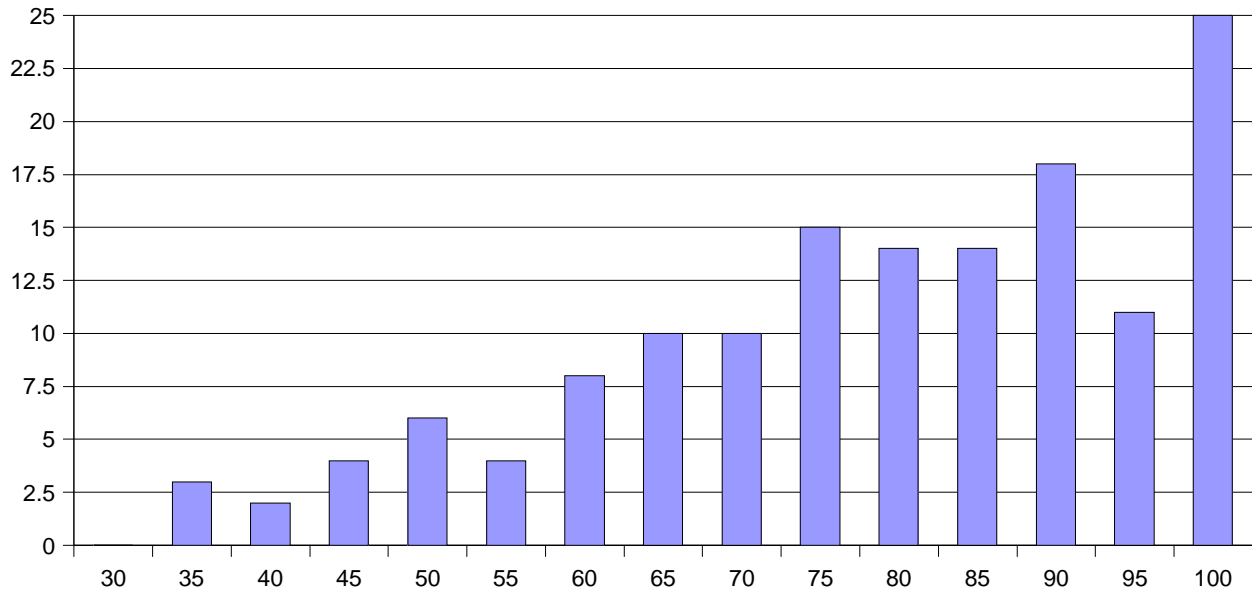


Q

MIT 6.042 Fall '02 Quiz 2 Statistics

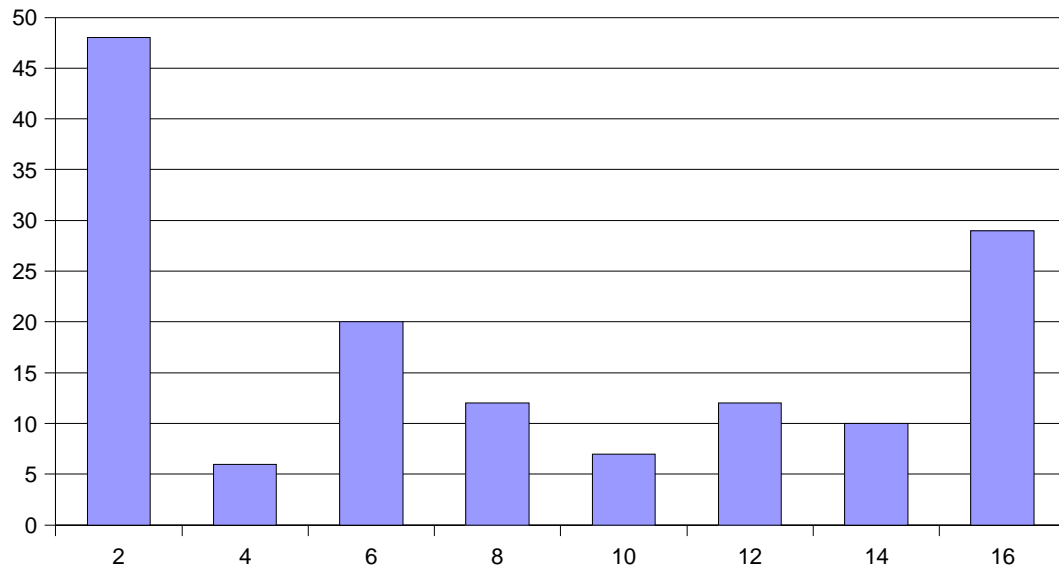
Quiz 2 Histogram



<i>Mean</i>	76.69
<i>Median</i>	78.5
<i>Standard Deviation</i>	17.34

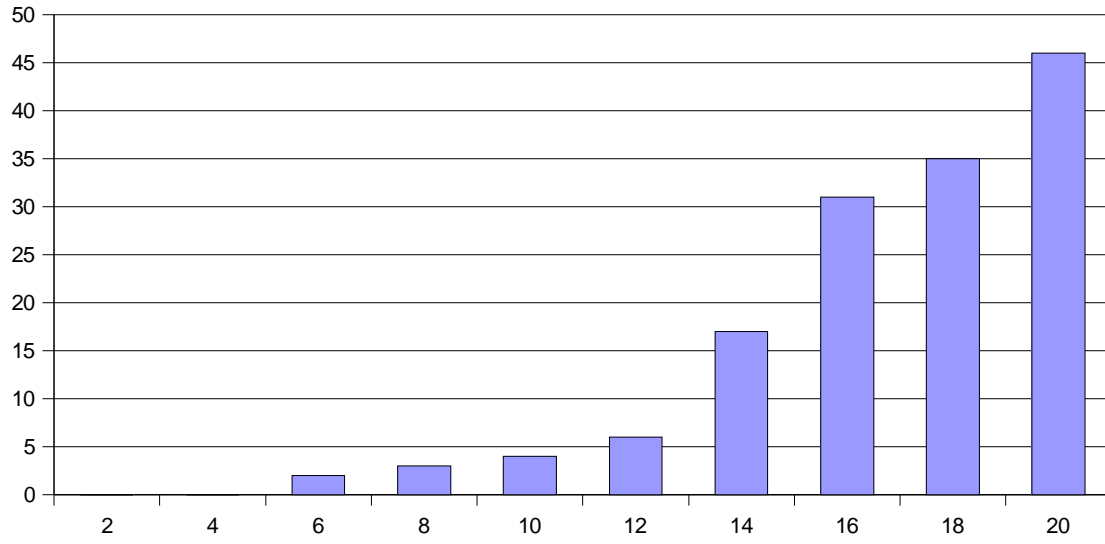
P1

Problem 1 Histogram



<i>Mean</i>	7.01
<i>Median</i>	6
<i>Standard Dev</i>	5.89

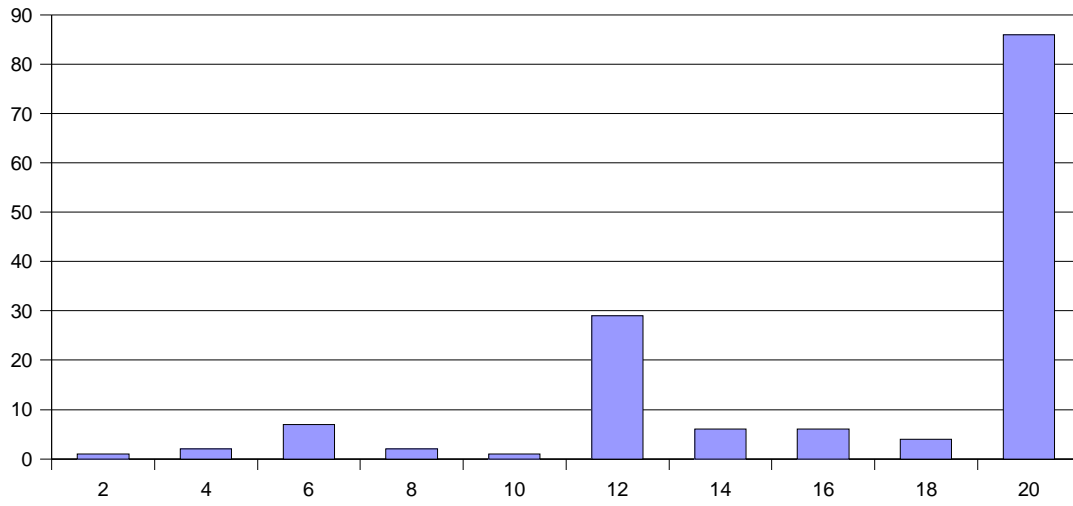
Problem 2 Histogram



<i>Mean</i>	16.5
<i>Median</i>	17
<i>Standard Deviation</i>	3.26

P3

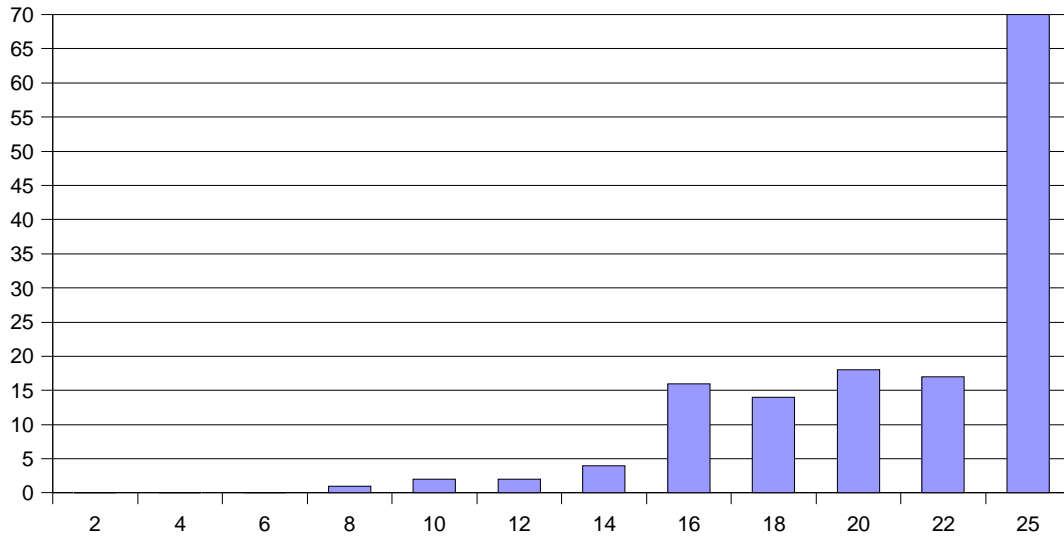
Problem 3 Histogram



<i>Mean</i>	16.52
<i>Median</i>	20
<i>Standard Deviation</i>	4.83

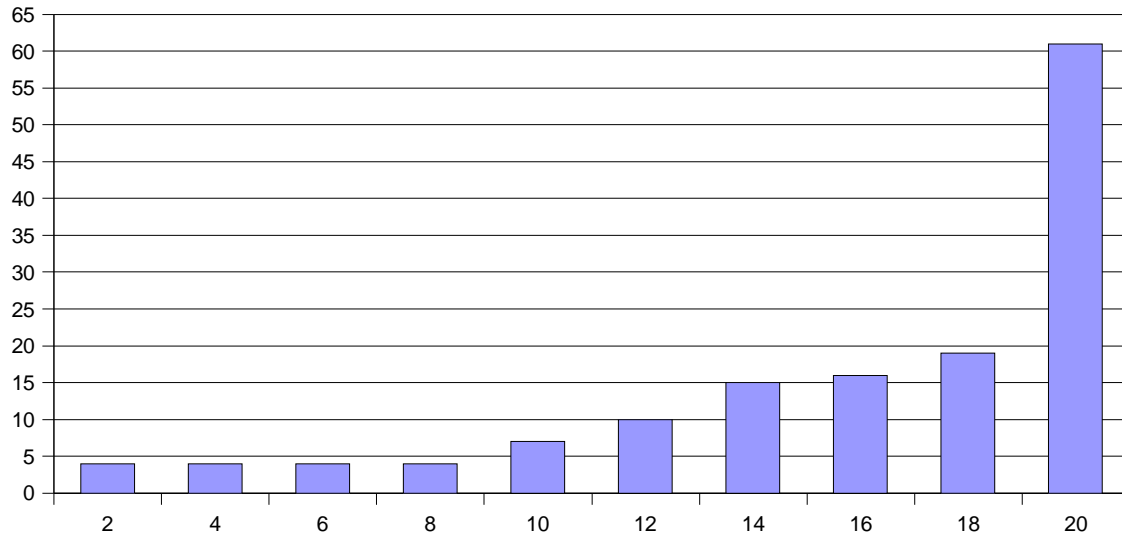
P4

Problem 4 Histogram



<i>Mean</i>	21.04
<i>Median</i>	22
<i>Standard Deviation</i>	4.11

Problem 5 Histogram



<i>Mean</i>	15.63
<i>Median</i>	17
<i>Standard Deviation</i>	5.24